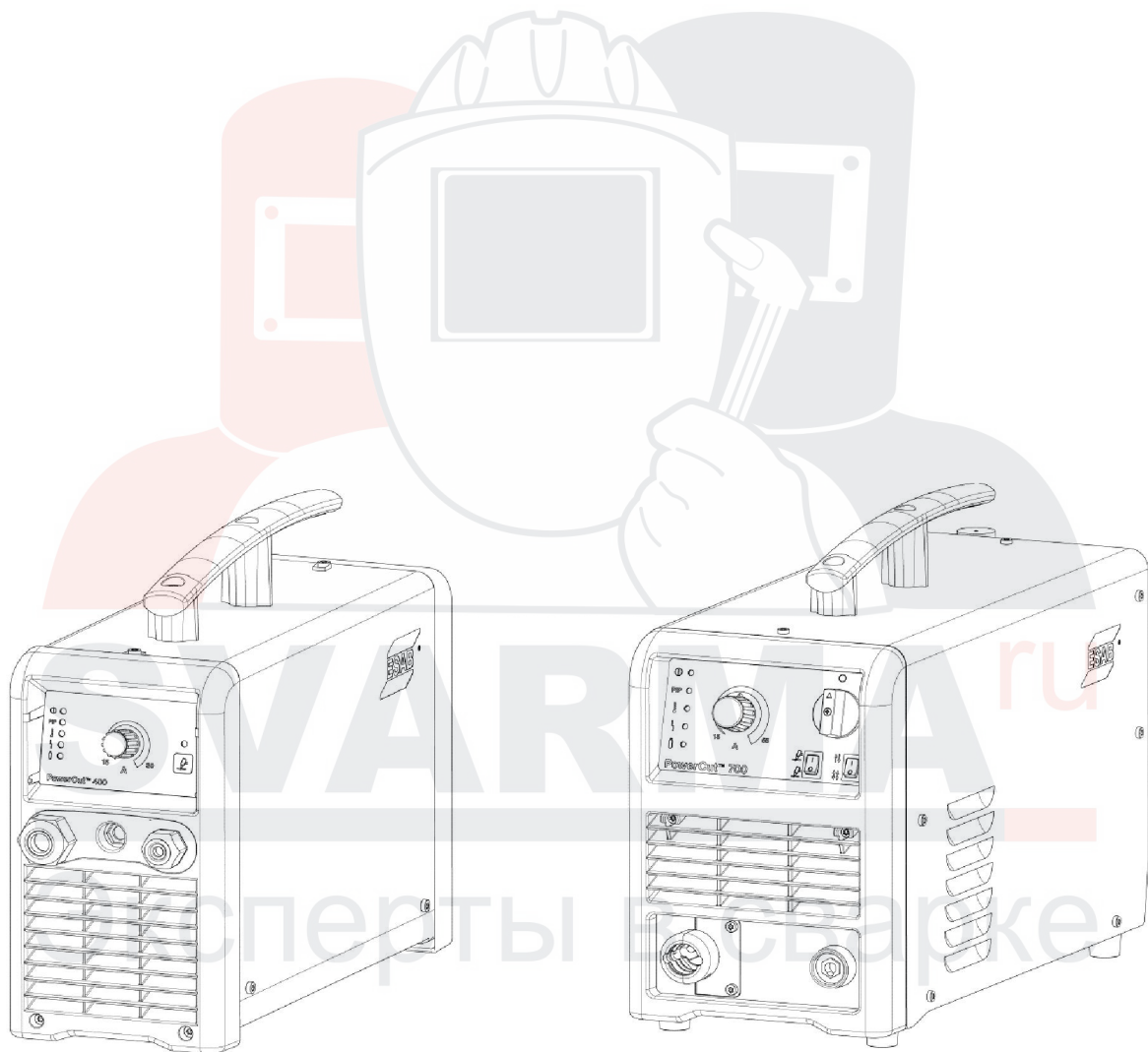


# ***PowerCut™ 400/700,*** ***PowerCut™ 400/700 CE***

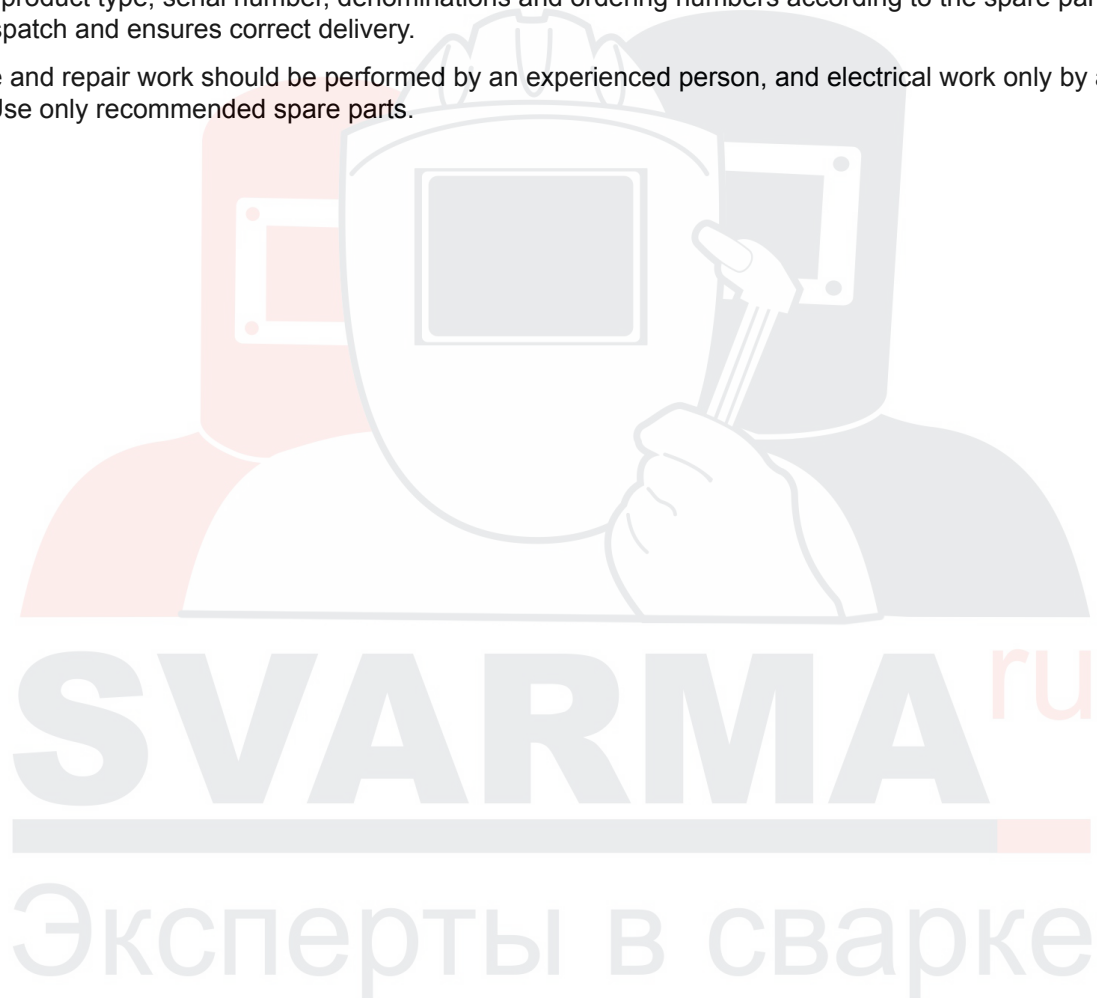


## **Spare parts list**

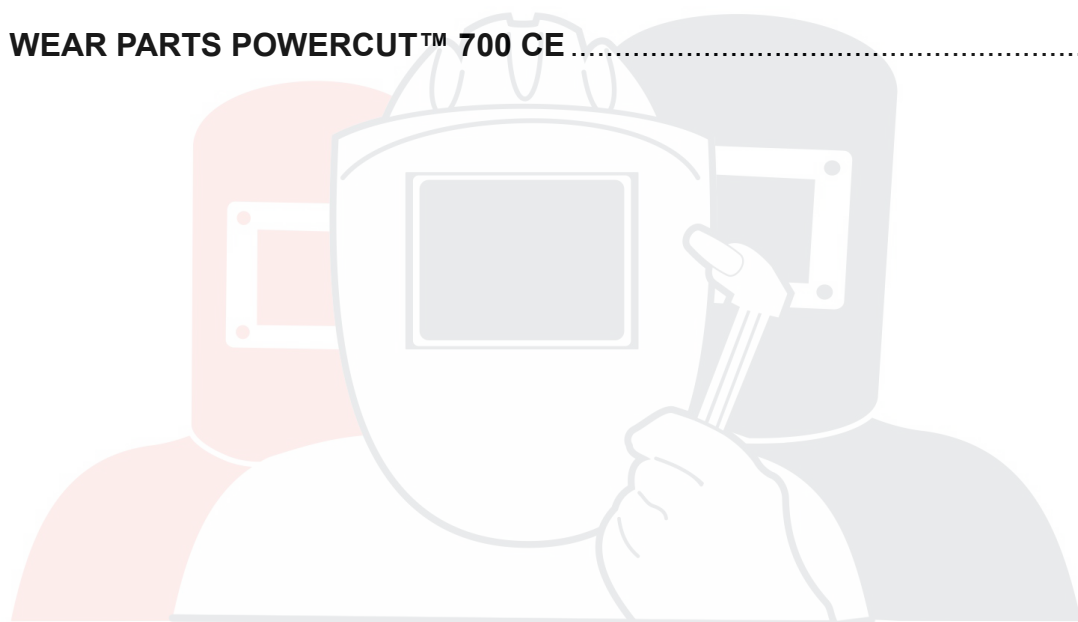
<b>Ordering no.</b>	<b>Product</b>
0558 011 649	PowerCut™400, power source for plasma cutting incl. torch (15 ft)
0558 011 673	PowerCut™700, power source for plasma cutting incl. torch (25 ft)
0700 210 880	PowerCut™400 CE, power source for plasma cutting incl. torch (4.5 m)
0700 210 881	PowerCut™700 CE, power source for plasma cutting incl. torch (7.6 m)

Spare parts may be ordered through your nearest ESAB dealer, see the back cover of this document. When ordering, please state product type, serial number, denominations and ordering numbers according to the spare parts list. This facilitates dispatch and ensures correct delivery.

Maintenance and repair work should be performed by an experienced person, and electrical work only by a trained electrician. Use only recommended spare parts.



<b>SPARE PARTS POWERCUT™ 400</b> .....	<b>4</b>
<b>SPARE PARTS POWERCUT™ 700</b> .....	<b>6</b>
<b>SPARE PARTS POWERCUT™ 400 CE</b> .....	<b>8</b>
<b>SPARE PARTS POWERCUT™ 700 CE</b> .....	<b>10</b>
<b>WEAR PARTS POWERCUT™ 400</b> .....	<b>12</b>
<b>WEAR PARTS POWERCUT™ 700</b> .....	<b>13</b>
<b>WEAR PARTS POWERCUT™ 400 CE</b> .....	<b>14</b>
<b>WEAR PARTS POWERCUT™ 700 CE</b> .....	<b>15</b>



**SVARMA** ru

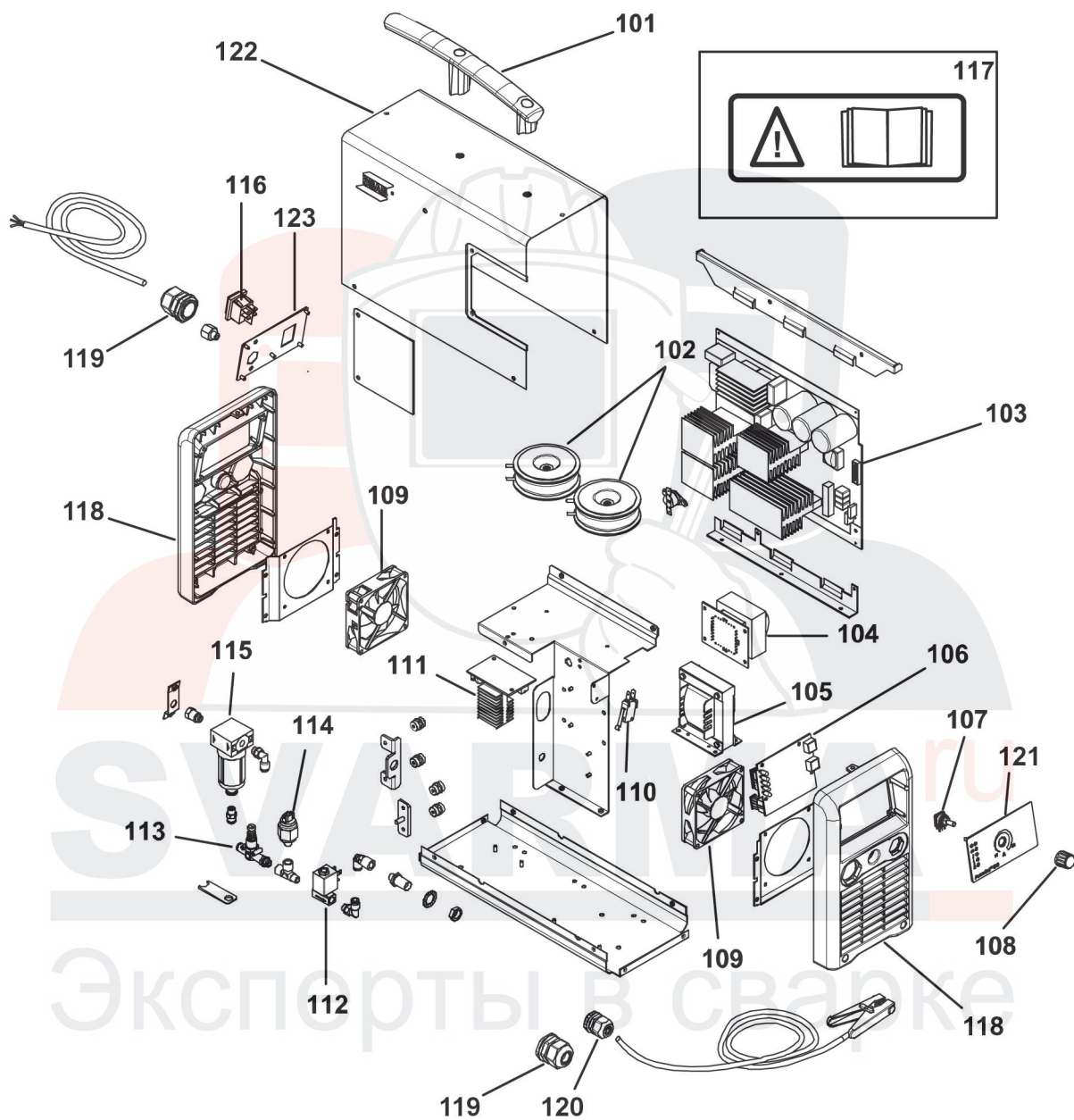
Эксперты в сварке

## SPARE PARTS POWERCUT™ 400

**C = component designation in the circuit diagram**

Item	Qty	Ordering no.	Denomination	Notes	C
101	1	0459 119 001	Handle		
102	2	0700 210 016	Inductors PFC		L2, L3
103	1	0700 210 014	Control Board		
104	1	0700 210 012	Transformer		
105	1	0700 210 009	Inductance		
106	1	0700 210 008	Display board		
107	1	0700 210 007	Potentiometer current setting		
108	1	0700 210 005	Knob current setting		
109	2	0700 210 025	Fan		MV1, MV2
110	1	0700 210 010	Safety switch		S2
111	1	0700 210 027	Pilot arc board		
112	1	0700 210 040	Solenoid valve		
113	1	0700 210 038	Set air regulator		
114	1	0700 210 031	Air sensor		
115	1	0700 210 034	Air regulator		
116	1	0700 210 020	Main switch		S1
117	1	0458 950 001	Sign		
118	2	0700 210 001	Front/Rear panel		
119	2	0700 210 002	Cable relief (torch)		
120	1	0700 210 003	Cable relief (work)		
121	1	0700 210 006	Operator panel (label only)		
122	1	0700 210 018	Metal cover		
123	1	0700 210 023	Rear panel		



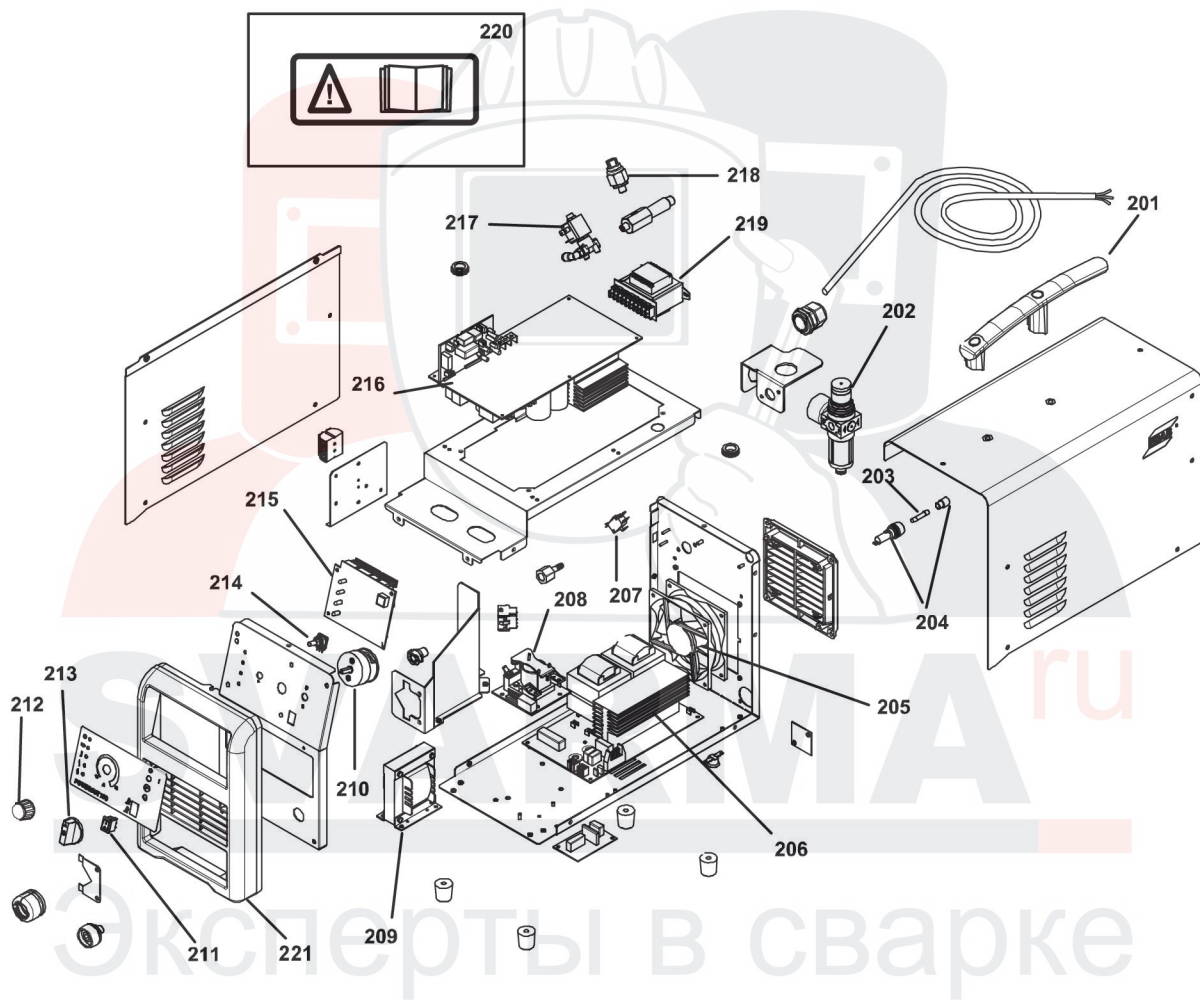


## SPARE PARTS POWERCUT™ 700

**C = component designation in the circuit diagram**

Item	Qty	Ordering no.	Denomination	Notes	C
201	1	0459 119 001	Handle		
202	1	0700 210 125	Air regulator		
203	1	0558 011 571	Fuse		F1
204	1	0700 210 121	Fuse holder		
205	1	0700 210 117	Fan		FAN1
206	1	0700 210 115	Secondary inverter board		
207	1	0700 210 010	Safety switch		
208	1	0700 210 135	Pilot arc board		
209	1	0700 210 111	Inductance		
210	1	0700 210 110	Main switch		S1
211	1	0700 210 107	2-position switch		
212	1	0700 210 005	Knob current switch		
213	1	0700 210 103	Knob for main switch		
214	1	0700 210 007	Potentiometer current setting		
215	1	0700 210 140	Display board		
216	1	0700 210 131	Primary board		
217	1	0700 210 130	Solenoid valve		EVA1
218	1	0700 210 129	Sensor		
219	1	0700 210 127	Transformer		
220	1	0458 950 001	Sign		
221	1	0700 210 109	Front panel		

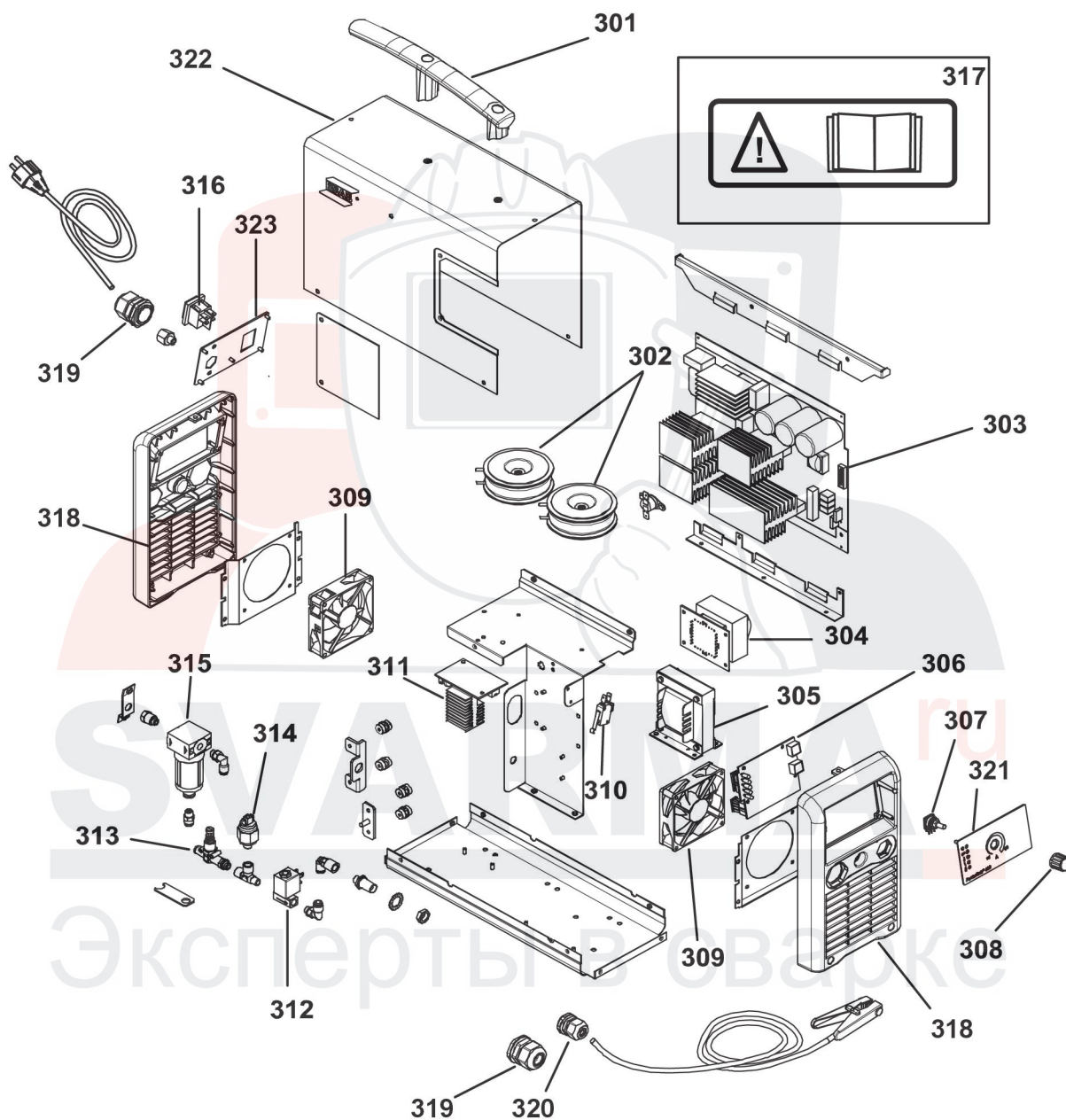
Эксперты в сварке



## SPARE PARTS POWERCUT™ 400 CE

**C = component designation in the circuit diagram**

Item	Qty	Ordering no.	Denomination	Notes	C
301	1	0459 119 001	Handle		
302	2	0700 210 016	Inductors PFC		L2, L3
303	1	0700 210 049	Control Board		
304	1	0700 210 012	Transformer		
305	1	0700 210 009	Inductance		
306	1	0700 210 008	Display board		
307	1	0700 210 007	Potentiometer current setting		
308	1	0700 210 005	Knob current setting		
309	2	0700 210 025	Fan		MV1, MV2
310	1	0700 210 010	Safety switch		S2
311	1	0700 210 027	Pilot arc board		
312	1	0700 210 040	Solenoid valve		
313	1	0700 210 038	Set air regulator		
314	1	0700 210 031	Air sensor		
315	1	0700 210 034	Air regulator		
316	1	0700 210 020	Main switch		S1
317	1	0458 950 001	Sign		
318	2	0700 210 001	Front/Rear panel		
319	2	0700 210 002	Cable relief (torch)		
320	1	0700 210 003	Cable relief (work)		
321	1	0700 210 006	Operator panel (label only)		
322	1	0700 210 018	Metal cover		
323	1	0700 210 023	Rear panel		

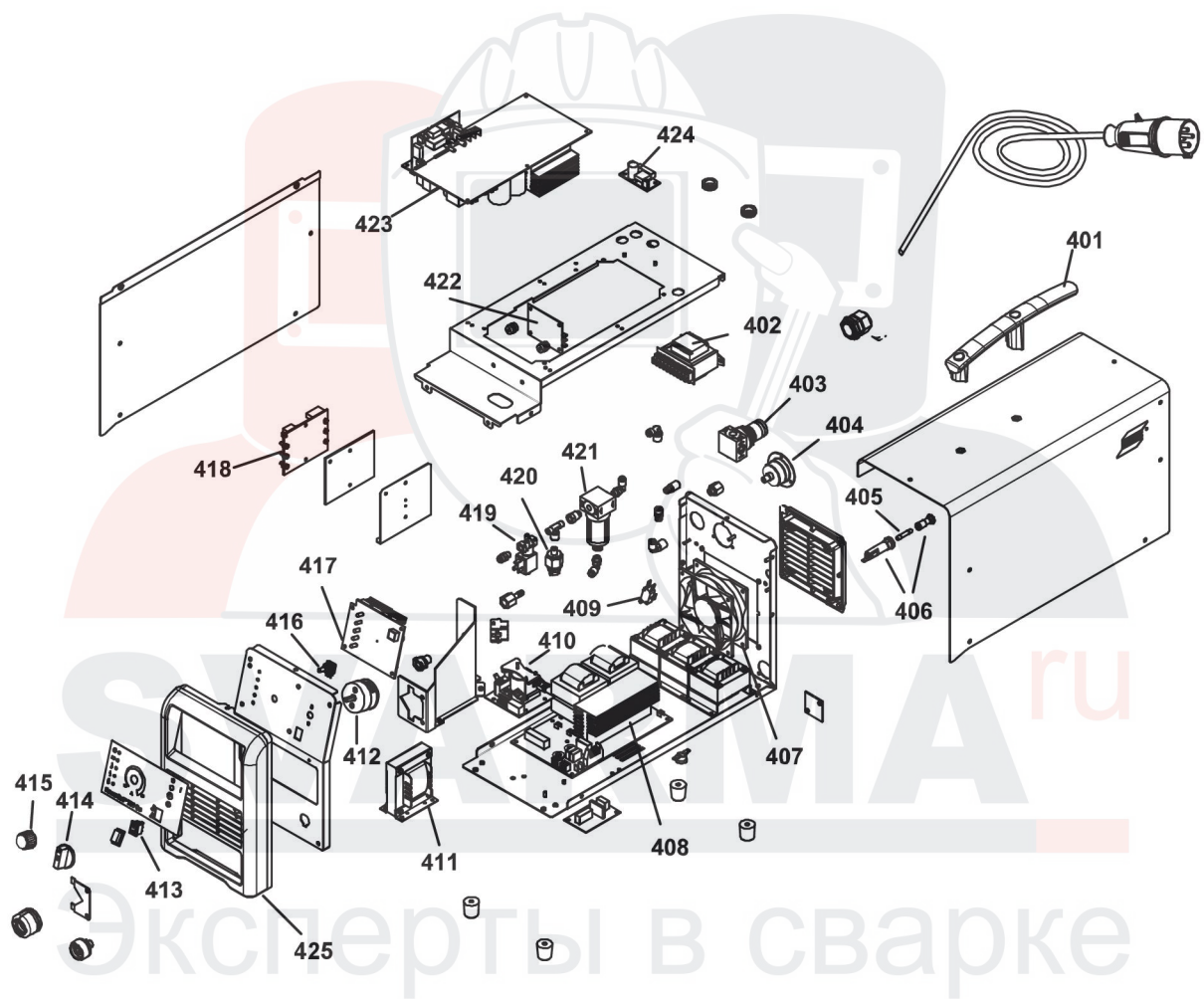


## SPARE PARTS POWERCUT™ 700 CE

**C = component designation in the circuit diagram**

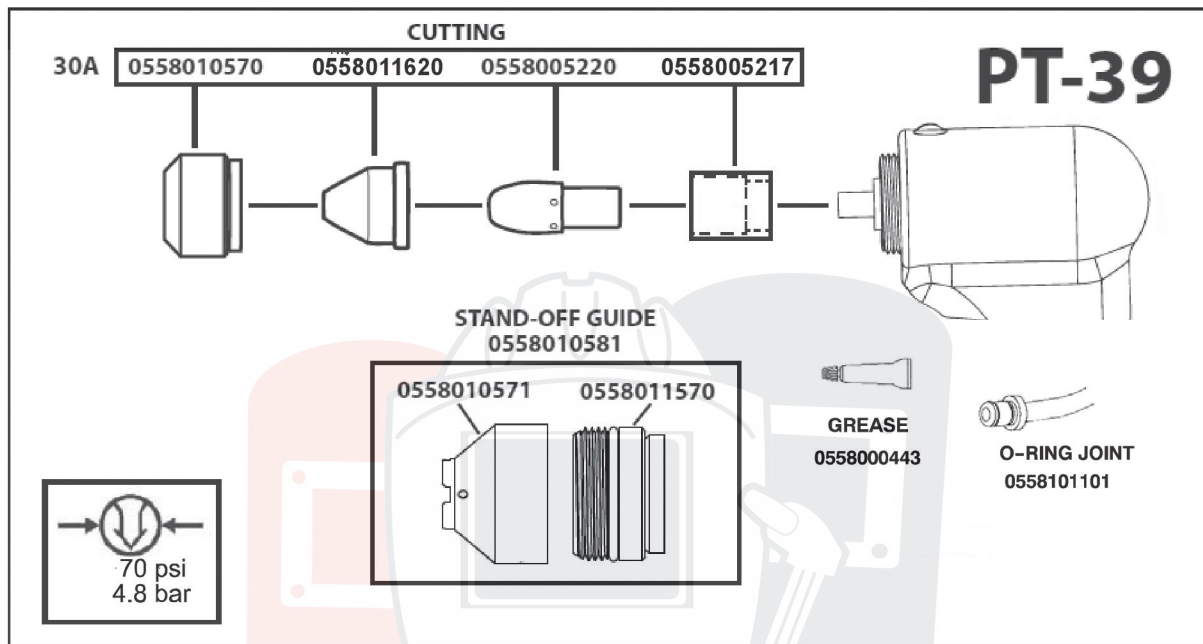
Item	Qty	Ordering no.	Denomination	Notes	C
401	1	0459 119 001	Handle		
402	1	0700 210 127	Transformer		
403	1	0700 210 155	Air regulator		
404	1	0700 210 156	Manometer		
405	1		Fuse	100 mA T delay 6.3×32	F1
406	1	0700 210 121	Fuse holder		
407	1	0700 210 152	Fan		FAN1
408	1	0700 210 150	Secondary inverter board		
409	1	0700 210 010	Safety switch		
410	1	0700 210 135	Pilot arc board		
411	1	0700 210 111	Inductance		
412	1	0700 210 147	Main switch		S1
413	1	0700 210 107	2-position switch		
414	1	0700 210 103	Knob for main switch		
415	1	0700 210 005	Knob for current setting		
416	1	0700 210 007	Potentiometer current setting		
417	1	0700 210 140	Display board		
418	1	0700 210 170	Filter board		
419	1	0700 210 130	Solenoid valve		EVA1
420	1	0700 210 129	Sensor		
421	1	0700 210 163	Air filter		
422	1	0700 210 172	Fuse board		
423	1	0700 210 174	Primary board		
424	1	0700 210 176	Fan PCB		
425	1	0700 210 109	Front panel		





## WEAR PARTS POWERCUT™ 400

## Wear parts 30 Amp



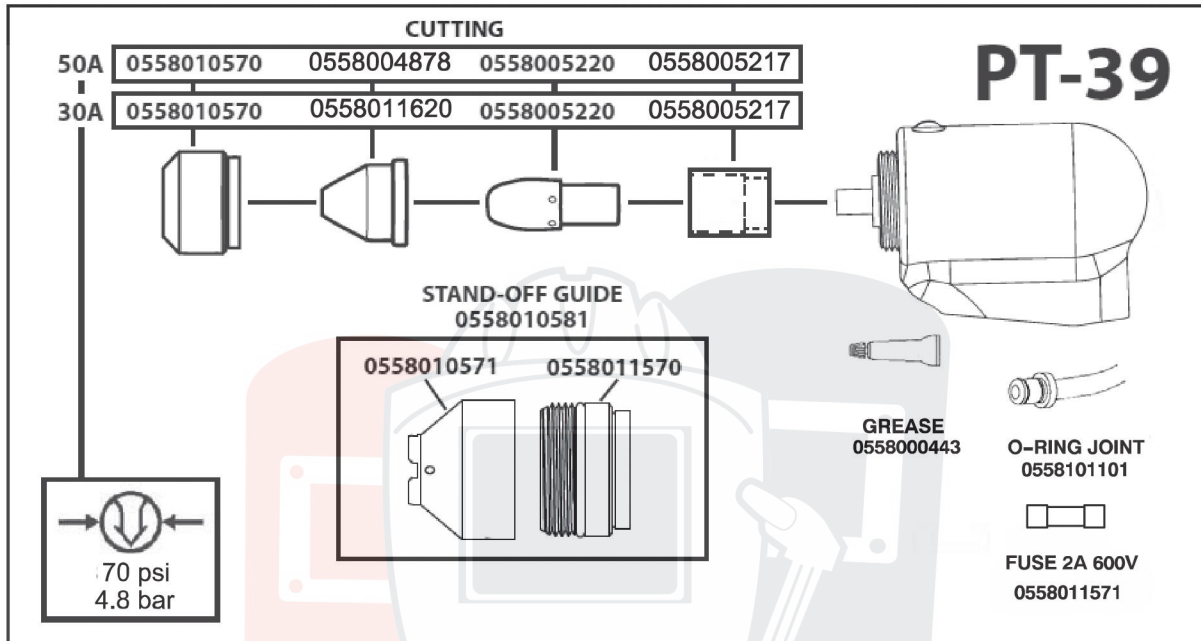
## Wear part kit PT-39

Qty	Ordering number	Denomination	Notes
	<b>0558 010 583</b>	<b>Wear parts kit consisting of:</b>	<b>30 Amp for PowerCut 400</b>
3	0558 005 220	Electrone	
1	0558 005 217	Gas baffle	30-80 Amp
4	0558 011 620	Nozzle	30 Amp
1	0558 010 570	Retaining clip	
1	0558 010 581	Standoff guide assy	
3		O-ring	.301ID .070W Nitrile
1		Grease silicon dow	DC-111 (1/4 Oz)



## WEAR PARTS POWERCUT™ 700

## Wear parts 30, 50 Amp

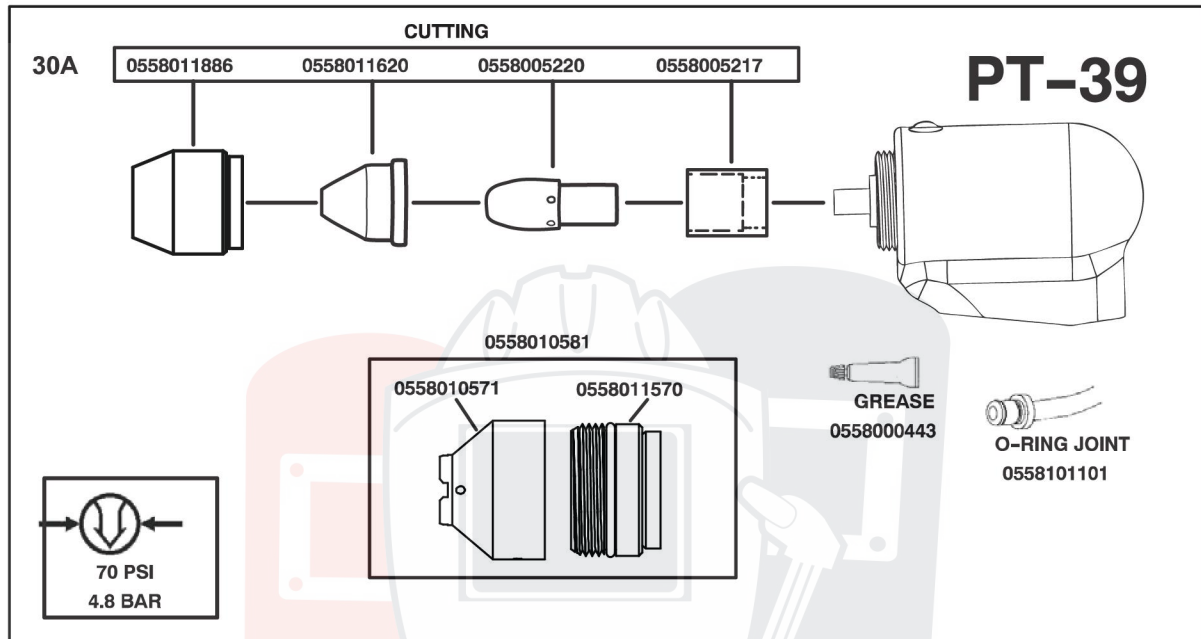


## Wear part kit PT-39

Qty	Ordering number	Denomination	Notes
	<b>0558 010 584</b>	<b>Wear parts kit consisting of:</b>	<b>50 Amp for PowerCut 700</b>
3	0558 005 220	Electrone	
1	0558 005 217	Gas baffle	30-80 Amp
4	0558 004 878	Nozzle	50 Amp
1	0558 010 570	Retaining clip	
1	0558 010 581	Standoff guide assy	
3		O-ring	.301ID .070W Nitrile
1		Grease silicon dow	DC-111 (1/4 Oz)
1		Fuse fast-act	2 A / 250 V

## WEAR PARTS POWERCUT™ 400 CE

## Wear parts 30 Amp

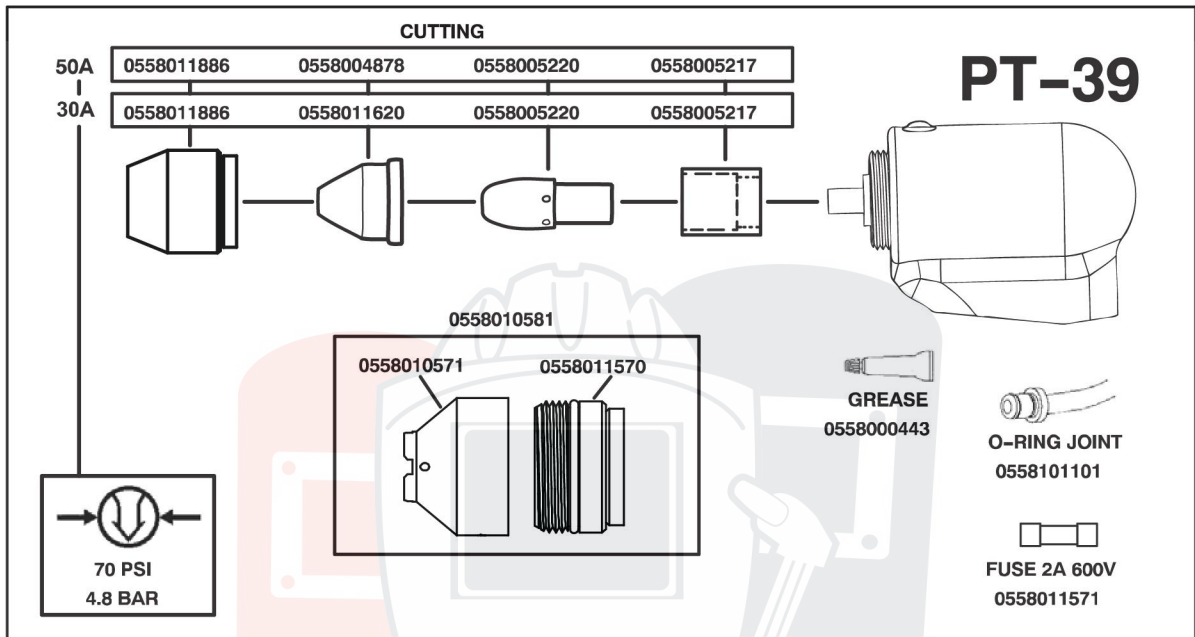


## Wear part kits PT-39 CE

Qty	Ordering number	Denomination	Notes
	<b>0558 010 586</b>	<b>Wear parts kit consisting of:</b>	<b>30 Amp for PowerCut 400</b>
3	0558 005 220	Electrone	
1	0558 005 217	Gas baffle	30-80 Amp
4	0558 011 620	Nozzle	30 Amp
1	0558 011 886	Retaining clip	
1	0558 010 581	Standoff guide assy	
3		O-ring	.301ID .070W Nitrile
1		Grease silicon dow	DC-111 (1/4 Oz)

WEAR PARTS POWERCUT™ 700 CE

Wear parts 30, 50 Amp



Wear part kits PT-39 CE

Qty	Ordering number	Denomination	Notes
	<b>0558 010 585</b>	<b>Wear parts kit consisting of:</b>	<b>50 Amp for PowerCut 700</b>
3	0558 005 220	Electrone	
1	0558 005 217	Gas baffle	30-80 Amp
4	0558 004 878	Nozzle	50 Amp
1	0558 011 886	Retaining clip	
1	0558 010 581	Standoff guide assy	
3		O-ring	.301ID .070W Nitrile
1		Grease silicon dow	DC-111 (1/4 Oz)
1		Fuse fast-act	2 A / 250 V

# ESAB subsidiaries and representative offices

## Europe

### AUSTRIA

ESAB Ges.m.b.H  
Vienna-Liesing  
Tel: +43 1 888 25 11  
Fax: +43 1 888 25 11 85

### BELGIUM

S.A. ESAB N.V.  
Heist-op-den-Berg  
Tel: +32 15 25 79 30  
Fax: +32 15 25 79 44

### BULGARIA

ESAB Kft Representative Office  
Sofia  
Tel: +359 2 974 42 88  
Fax: +359 2 974 42 88

### THE CZECH REPUBLIC

ESAB VAMBERK s.r.o.  
Vamberk  
Tel: +420 2 819 40 885  
Fax: +420 2 819 40 120

### DENMARK

Aktieselskabet ESAB  
Herlev  
Tel: +45 36 30 01 11  
Fax: +45 36 30 40 03

### FINLAND

ESAB Oy  
Helsinki  
Tel: +358 9 547 761  
Fax: +358 9 547 77 71

### GREAT BRITAIN

ESAB Group (UK) Ltd  
Waltham Cross  
Tel: +44 1992 76 85 15  
Fax: +44 1992 71 58 03

ESAB Automation Ltd  
Andover  
Tel: +44 1264 33 22 33  
Fax: +44 1264 33 20 74

### FRANCE

ESAB France S.A.  
Cergy Pontoise  
Tel: +33 1 30 75 55 00  
Fax: +33 1 30 75 55 24

### GERMANY

ESAB GmbH  
Solingen  
Tel: +49 212 298 0  
Fax: +49 212 298 218

### HUNGARY

ESAB Kft  
Budapest  
Tel: +36 1 20 44 182  
Fax: +36 1 20 44 186

### ITALY

ESAB Saldatura S.p.A.  
Bareggio (Mi)  
Tel: +39 02 97 96 8.1  
Fax: +39 02 97 96 87 01

### THE NETHERLANDS

ESAB Nederland B.V.  
Amersfoort  
Tel: +31 33 422 35 55  
Fax: +31 33 422 35 44

## NORWAY

AS ESAB  
Larvik  
Tel: +47 33 12 10 00  
Fax: +47 33 11 52 03

## POLAND

ESAB Sp.zo.o.  
Katowice  
Tel: +48 32 351 11 00  
Fax: +48 32 351 11 20

## PORTUGAL

ESAB Lda  
Lisbon  
Tel: +351 8 310 960  
Fax: +351 1 859 1277

## ROMANIA

ESAB Romania Trading SRL  
Bucharest  
Tel: +40 316 900 600  
Fax: +40 316 900 601

## RUSSIA

LLC ESAB  
Moscow  
Tel: +7 (495) 663 20 08  
Fax: +7 (495) 663 20 09

## SLOVAKIA

ESAB Slovakia s.r.o.  
Bratislava  
Tel: +421 7 44 88 24 26  
Fax: +421 7 44 88 87 41

## SPAIN

ESAB Ibérica S.A.  
Alcalá de Henares (MADRID)  
Tel: +34 91 878 3600  
Fax: +34 91 802 3461

## SWEDEN

ESAB Sverige AB  
Gothenburg  
Tel: +46 31 50 95 00  
Fax: +46 31 50 92 22

ESAB International AB  
Gothenburg  
Tel: +46 31 50 90 00  
Fax: +46 31 50 93 60

## SWITZERLAND

ESAB AG  
Dietikon  
Tel: +41 1 741 25 25  
Fax: +41 1 740 30 55

## UKRAINE

ESAB Ukraine LLC  
Kiev  
Tel: +38 (044) 501 23 24  
Fax: +38 (044) 575 21 88

## North and South America

### ARGENTINA

CONARCO  
Buenos Aires  
Tel: +54 11 4 753 4039  
Fax: +54 11 4 753 6313

### BRAZIL

ESAB S.A.  
Contagem-MG  
Tel: +55 31 2191 4333  
Fax: +55 31 2191 4440

### CANADA

ESAB Group Canada Inc.  
Mississauga, Ontario  
Tel: +1 905 670 02 20  
Fax: +1 905 670 48 79

### MEXICO

ESAB Mexico S.A.  
Monterrey  
Tel: +52 8 350 5959  
Fax: +52 8 350 7554

### USA

ESAB Welding & Cutting  
Products  
Florence, SC  
Tel: +1 843 669 44 11  
Fax: +1 843 664 57 48

## Asia/Pacific

### AUSTRALIA

ESAB South Pacific  
Archerfield BC QLD 4108  
Tel: +61 1300 372 228  
Fax: +61 7 3711 2328

### CHINA

Shanghai ESAB A/P  
Shanghai  
Tel: +86 21 2326 3000  
Fax: +86 21 6566 6622

### INDIA

ESAB India Ltd  
Calcutta  
Tel: +91 33 478 45 17  
Fax: +91 33 468 18 80

### INDONESIA

P.T. ESABindo Pratama  
Jakarta  
Tel: +62 21 460 0188  
Fax: +62 21 461 2929

### JAPAN

ESAB Japan  
Tokyo  
Tel: +81 45 670 7073  
Fax: +81 45 670 7001

### MALAYSIA

ESAB (Malaysia) Snd Bhd  
USJ  
Tel: +603 8023 7835  
Fax: +603 8023 0225

### SINGAPORE

ESAB Asia/Pacific Pte Ltd  
Singapore  
Tel: +65 6861 43 22  
Fax: +65 6861 31 95

## SOUTH KOREA

ESAB SeAH Corporation  
Kyungnam  
Tel: +82 55 269 8170  
Fax: +82 55 289 8864

## UNITED ARAB EMIRATES

ESAB Middle East FZE  
Dubai  
Tel: +971 4 887 21 11  
Fax: +971 4 887 22 63

## Africa

### EGYPT

ESAB Egypt  
Dokki-Cairo  
Tel: +20 2 390 96 69  
Fax: +20 2 393 32 13

### SOUTH AFRICA

ESAB Africa Welding & Cutting  
Ltd  
Durbanville 7570 - Cape Town  
Tel: +27 (0)21 975 8924

## Distributors

*For addresses and phone numbers to our distributors in other countries, please visit our home page*

[www.esab.com](http://www.esab.com)